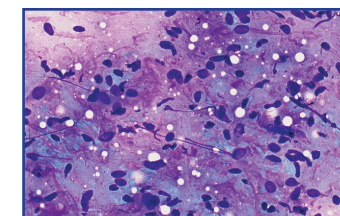




Endocrine, Head, and Neck Pathology

The Endocrine, Head, and Neck Pathology Program supports the Yale–New Haven Hospital endocrine referral center, one of the largest in the nation for the treatment of thyroid and parathyroid diseases. The Head and Neck Oncology service is a tertiary referral center in Connecticut and treats complex and rare cancer cases. The senior lead pathologist on the team has more than 10 years experience in this area, and is readily accessible for second opinions and consultations. Our immunohistochemistry laboratory is well equipped for extensive work-up of undifferentiated tumors. Our cytopathologists have extensive experience in Fine Needle Aspiration of thyroid and other head and neck nodules.



Manju Prasad, M.D.
Associate Professor of Pathology
Director, Endocrine, Head and Neck Pathology
Director, Immunohistochemistry Laboratory

Renu Virk, M.D.
Clinical Instructor in Pathology

