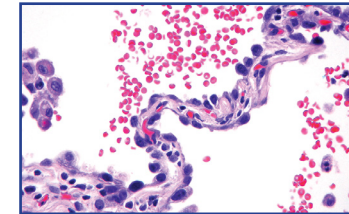


Thoracic & Urologic Pathology

The Yale Program in Urologic Pathology offers comprehensive diagnostic services on biopsies and resections from the kidney, ureter, bladder, urethra, prostate, and testis. Results of comprehensive examinations are rendered with an emphasis on prognosis and prediction of the response to therapy. For that we employ our state-of-the-art diagnostic facilities, which include laboratories specializing in molecular diagnostics, cytopathology, immunohistochemistry, flow cytometry, electron microscopy, and cytogenetics.



Adebowale Adeniran, M.D.
Assistant Professor of Pathology
Interim Director, Thoracic & Urologic Pathology
Associate Director, Pathology Residency Program

Guoping Cai, M.D.
Assistant Professor of Pathology

Robert J. Homer, M.D., Ph.D.
Professor of Pathology and of Medicine (Pulmonary)
Director, Medical Student Course Module

Angelique Levi, M.D.
Assistant Professor of Pathology

John Sinard, M.D., Ph.D.
Professor of Pathology and Ophthalmology and Visual Science
Director, Pathology Informatics
Associate Director, Anatomic Pathology

