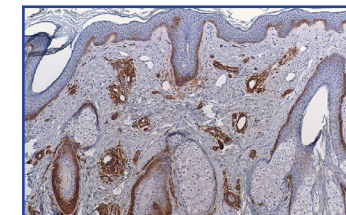


Dermatopathology

The Yale Dermatopathology Program, directed by Jennifer M. McNiff, M.D., currently has the most sophisticated and technically advanced laboratory of its kind in the region and is one of the largest laboratories in the country providing diagnoses of skin, hair, and nail lesions. Our high clinical volume also provides ample material for research purposes, and our board-certified faculty, in addition to performing independent case studies, collaborate with scientists at the University. The Yale Dermatopathology Program is dedicated to teaching as well as to clinical work, offering a dermatopathology fellowship and resident training rotations for qualified residents from around the world.



Jennifer M. McNiff, M.D.
Professor of Dermatology and Pathology
Director, Dermatopathology Program

Marcus W. Bosenberg, M.D., Ph.D.
Associate Professor of Dermatology and Pathology

Keith Choate, M.D.
Associate Professor of Dermatology and Pathology

Shawn E. Cowper, M.D.
Associate Professor of Dermatology and Pathology

Anjela Galan, M.D.
Assistant Professor of Dermatology and Pathology

Earl J. Glusac, M.D.
Professor of Pathology and Dermatology
Director, Physician Associate Studies

Christine J. Ko, M.D.
Associate Professor of Dermatology
and Pathology

Rossitza Z. Lazova, M.D.
Associate Professor of Dermatology
and Pathology

Antonio Subtil-Deoliveira, M.D.
Associate Professor of Dermatology
and Pathology

