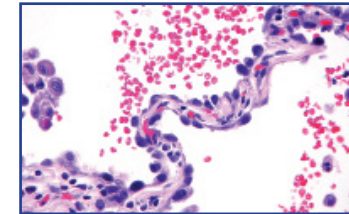




## Thoracic & Urologic Pathology

The Yale Program in Urologic Pathology offers comprehensive diagnostic services on biopsies and resections from the kidney, ureter, bladder, urethra, prostate, and testis. Results of comprehensive examinations are rendered with an emphasis on prognosis and prediction of the response to therapy. For that we employ our state-of-the-art diagnostic facilities, which include laboratories specializing in molecular diagnostics, cytopathology, immunohistochemistry, flow cytometry, electron microscopy, and cytogenetics.



**Robert J. Homer, M.D., Ph.D.**  
Professor of Pathology and of Medicine (Pulmonary)  
Director, Thoracic Pathology  
Director, Medical Student Course Module

**Peter Humphrey, M.D.**  
Professor of Pathology  
Director, Genitourinary Pathology

**Adebowale Adeniran, M.D.**  
Associate Professor of Pathology  
Associate Director, Pathology Residency Program

**Guoping Cai, M.D.**  
Associate Professor of Pathology

**Angelique Levi, M.D.**  
Assistant Professor of Pathology

**John Sinard, M.D., Ph.D.**  
Professor of Pathology and  
Ophthalmology and Visual Science  
Director, Pathology Informatics  
Associate Director, Anatomic Pathology

Copyright ©2014 Yale Pathology. All rights reserved.

